

RGBWA+UV

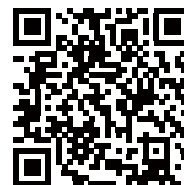
CS-B110A BATTERY PAR CAN

User Manual

KEEP THIS MANUAL FOR FUTURE NEEDS

color'sage

- 📍 Factory: 6 Floor, A Building, No.1742 Panyu North Ave,Panyu District, Guangzhou.
- 📍 Office: No.34-208, Longqi Road, Qiaonan Street, Panyu District,Guangzhou.
- ☎ +86-20-3110 3721
- ✉ info@color-sage.com



[www. color-sage. com](http://www.color-sage.com)



YOUTUBE



FACEBOOK

1. SAFETY INSTRUCTIONS

*CAUTION!

Becareful with your operations. With a dangerous voltage you cansuffer a dangerous electric shock when touching wires!

This device has left the factory in perfect condition. In order to maintain this condition and to ensure a safe operation, it is absolutely necessary for the user to follow the safety instructions and warning notes written in this user manual.

*IMPORTANT!

Damages caused by the disregard of this user manual are not subject to warranty. The dealer will not accept liability for any resulting defects or problems.

If the device has been exposed to temperature changes due to environmental changes, do not switch it on immediately. The arising condensation could damage the device.

Leave the device switched off until it has reached room temperature.

This device falls under protection-class I. Therefore it is essential that the device be earthed.

The electric connection must carry out by qualified person.

The device shall only be used with rate voltage and frequency.

Make sure that the available voltage is not higher than stated at the end of this manual.

Make sure the power cord is never crimped or damaged by sharp edges.

Always disconnect from the mains, when the device is not in use or before cleaning it.

Only handle the power cord by the plug. Never pull out the plug by tugging the power cord.

During initial start-up some smoke or smell may arise. This is a normal process and does not necessarily mean that the device is defective, it should decrease gradually.

Please don't project the beam onto combustible substances.

Fixtures cannot be installed on combustible substances, keep more than 50cm distance with wall for smooth air flow, so there should be no shelter for fans and ventilation for heat radiation.

If the external flexible cable or cord of this luminaire is damaged, it shall be exclusively replaced by the manufacturer or his service agent or a similar qualified person in order to avoid a hazard.

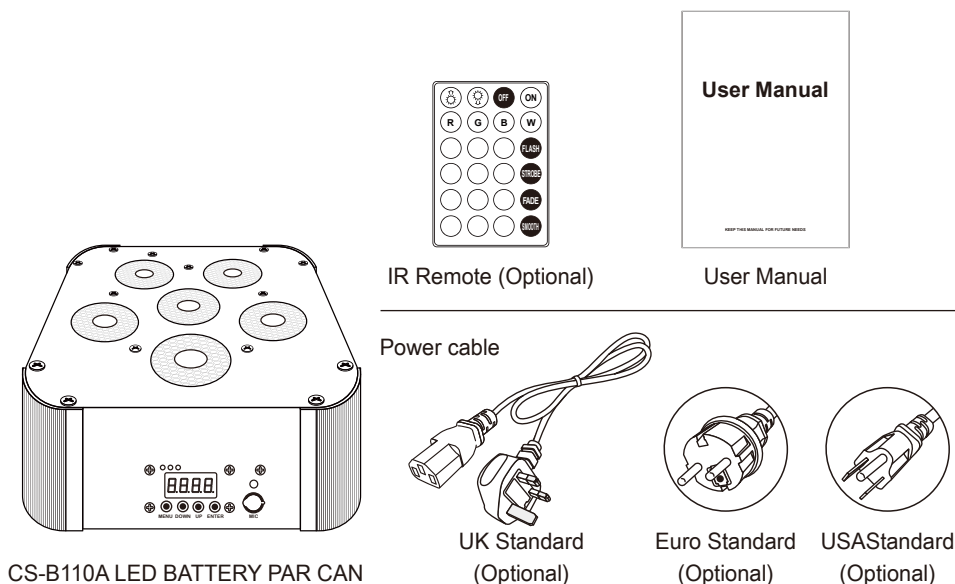
2. UNPACKING

Thank you for choosing our CS-B110A LED BATTERY PAR CAN.

For your own safety, please read this manual before installing the device. This manual covers the important information on installation and applications. Please install and operate the fixture with following instructions.

This is a special design LED BATTERY PAR CAN with 6pcs 18W LEDs, RGBWA+UV 6 in 1. It offers high brightness and good lighting effect. The power consumption is 110W.

This product is used to enliven atmosphere for family gatherings, KTV box, disco ballroom, ballroom, nightclub, disco, bar, mall, wedding, square, park, etc.



3. FEATURES & SPECIFICATIONS

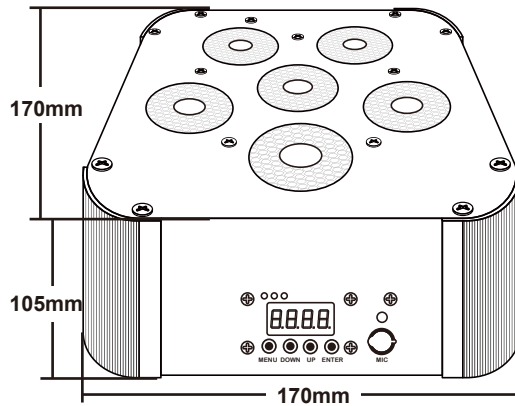
Function:

1. Slave/Master,
2. Sound activated,
3. Auto,
4. DMX 512,
5. IR remote control (Optional),
6. Color change,

7. Color strobe,
8. Color dimmer,
9. Color gradual change/Color jump change.

Specifications:

LED quantities: 6pcs LEDs
 Input Voltage: AC90V-250V, 50/60HZ
 Power consumption: 110W
 Channel: 6/10 CH
 Beam Angle: 25°
 Display Screen: LCD display
 Battery Type: Lithium battery
 Battery Charging Time: About 2-3 hours
 Battery Using Hours: About 6-8 hours of full color.
 Color: RGBWA+UV 6 in 1
 Material Science: Iron alloy



Packing & weight:

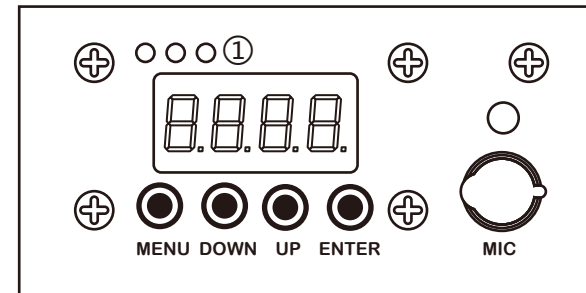
Size: 170mm*170mm*105mm
 Net Weight: 2.5kg
 Packing: 230mm*230mm*200mm
 Gross Weight: 3kg

4. OPERATION INSTRUCTIONS

01. Don't turn on the fixture if it's been through severe temperature difference like after transportation because it might damage the light due to the environment changes. So make sure to operate the fixture until it is in normal temperature.
02. This light should be keep away from strong shaking during any transportation or movement.
03. Don't pull up the light by only the head, or it might cause damages to the mechanical parts.
04. Don't expose the fixture in overheat, moisture or environment with too much dust when installing it. And don't lay any power cables on the floor. Or it might cause electronic shock to the people.
05. Make sure the installation place is in good safety condition before installing the fixture.

06. Make sure to put the safety chain and check whether the screws are screwed properly when installing the fixture.
07. Make sure the lens are in good condition. It's recommended to replace the units if there are any damages or severe scratch.
08. Make sure the fixture is operated by qualified personnel who knows the fixture before using.
09. Keep the original packages if any second shipment is needed.
10. Don't try to change the fixtures without any instruction by the manufacturer or the appointed repairing agencies.
11. It is not in warranty range if there are any malfunctions from not following the user manual to operate or any illegal operation, like shock short circuit, electronic shock, lamp broke, etc.

5. MENU OPERATIONS



①: Battery indicator

MENU: Access the menu.

DOWN: Reduction key or key under the selected; decrease the value function down menu.

UP: Add key or selection on the key; increase the value function, shift on the menu.

ENTER: It is used to select and confirm/store the current selection.

MENU	Function/Value	Instructions
A001	10 Channel mode, A001-A512.	DMX512 address setting
D001	6 Channel mode, D001-D512	DMX512 address setting
CC00	Color jump change	Wireless dmx control
EE00	Color gradual change	IR remote control
FF00	Color change	0-255 from dark to bright
At00	Auto mode/0-9	0-9, Speed from slow to fast
Sou1	Sound control/1-4	Voice sensitivity, 0-4 from low to high
Colo	Color select/0-9	10 kinds color selectable
CUS1	Custom color/1-5	6 kinds color selectable
r000	Red dimming/0-255	0-255 from dark to bright
G000	Green dimming/0-255	0-255 from dark to bright
b000	Blue dimming/0-255	0-255 from dark to bright
w000	White dimming/0-255	0-255 from dark to bright
y000	Amber dimming/0-255	0-255 from dark to bright
p000	Purple dimming/0-255	0-255 from dark to bright

6. DMX CHANNELS

6 Channel

Channel	Function/Value	Instructions
1	Red dimming	0-255 from dark to bright
2	Green dimming	0-255 from dark to bright
3	Blue dimming	0-255 from dark to bright
4	White dimming	0-255 from dark to bright
5	Amber dimming	0-255 from dark to bright
6	Purple dimming	0-255 from dark to bright

10 Channel

Channel	Function/Value	Instructions
1	Dimmer	Dimmer, 0-255 from slow to fast
2	Strobe	Start up light, 0-5 from slow to fast
		Turn off the light 6-10 from slow to fast
		Pulse mode, 11-100 from slow to fast
		Gradually brighter, 101-150 from slow to fast
		Gradually darken, 151-200 from slow to fast
		Speed, 201-255 from slow to fast
3	Effect	Adjust the color manually, 0-5 from slow to fast
		Color gradient, 6-50 from slow to fast
		Color gradient + gradually brighten, 51-100 from slow to fast
		Color Change + gradually brighten, 51-100 from slow to fast
	Function	Auto mode, 151-200
		Sound control, Voice sensitivity, 201-255 from low to high
4	Function speed	Function speed, 0-255 from slow to fast (When color output, it is color selection)
5	Red dimming	0-255 from dark to bright
6	Green dimming	0-255 from dark to bright
7	Blue dimming	0-255 from dark to bright
8	White dimming	0-255 from dark to bright
9	Amber dimming	0-255 from dark to bright
10	Purple dimming	0-255 from dark to bright

* If you find that the product menu does not comply with this manual, please contact us immediately and we will send a copy of the manual that suits you. Thank you!

7. Remote Controller Using (Optional)



This product does not support this



feature for now.



Turn OFF the current function or turn OFF the lights.



Turn ON the lights.



Flash function.



Strobe function.



Fade color function.



Color effect change smooth function.



Speed function.

sp1 is slow, sp2 is normal, sp 3 is fast.

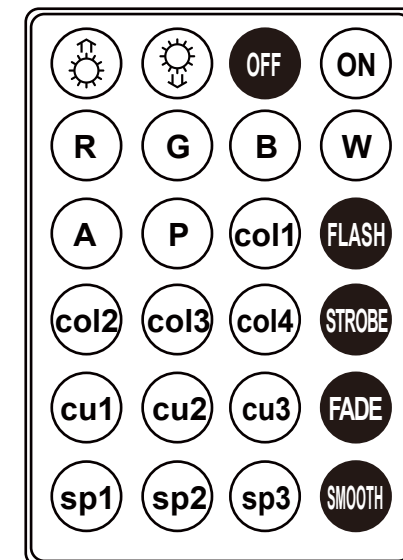


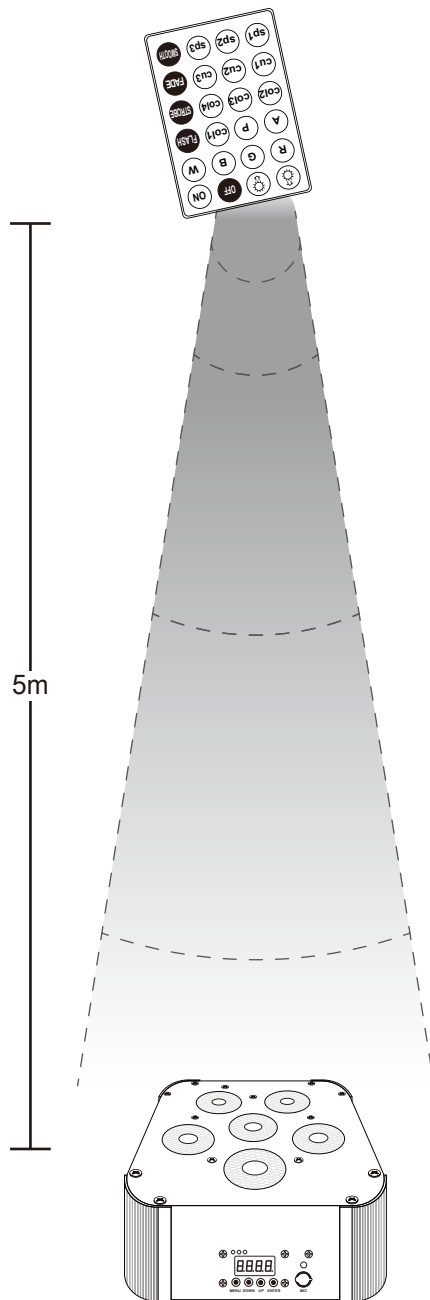
Custom color.

Without setting the case is red green and blue



Other Color.





Please use this remote controller within remote control range.

8. MAINTENANCE AND CLEANING

The following points have to be considered during the inspection:

1. All screws for installing the devices or parts of the device have to be tightly connected and must not be corroded.
2. There must not be any deformations on the housing, color lenses, fixations and installation spots (ceiling, suspension, trussing).
3. Mechanically moved parts must not show any traces of wearing and must not rotate with unbalances.
4. The electric power supply cables must not show any damage, material fatigue or sediments.

Further instructions depending on the installation spot and usage have to be adhered by a skilled installer and any safety problems have to be removed

***CAUTION!**

Disconnect from mains before starting maintenance operation.

In order to make the lights in good condition and extend the life time, we suggest a regular cleaning to the lights.

1. Clean the inside and outside lens each week to avoid the weakness of the lights due to accumulation of dust.
2. Clean the fan each week.
3. A detailed electric check by approved electrical engineer each three month, make sure that the circuit contacts are in good condition, prevent the poor contact of circuit from overheating.
4. Frequent cleaning. Please use a moist, lint- free cloth. Never use alcohol or solvents.

There are no serviceable parts inside the device. Please refer to the instructions under "Installation instructions".

Should you need any spare parts, please order genuine parts from your local dealer